

Ditulis oleh : Yuliusman Kurniawan <uuzkurniawan@yahoo.com>

Download MySQL JDBC driver dari web nya microsoft (sqljdbc_3.0.1301.101_enu)

| Name | Date modified | Type | Size | Tags |
|--|------------------|--------------------|----------|------|
| 313100_files | 17/01/2011 13:04 | File Folder | | |
| details.aspx_files | 17/01/2011 13:10 | File Folder | | |
| how-can-i-use-the-ms-jdbc-driver-with-ms-sql-server-2008-express_files | 17/01/2011 13:17 | File Folder | | |
| java_files | 17/01/2011 13:20 | File Folder | | |
| 313100 | 17/01/2011 13:04 | Firefox Document | 85 KB | |
| details.aspx | 17/01/2011 13:10 | Firefox Document | 44 KB | |
| how-can-i-use-the-ms-jdbc-driver-with-ms-sql-server-2008-express | 17/01/2011 13:17 | Firefox Document | 40 KB | |
| java | 17/01/2011 13:20 | Firefox Document | 2 KB | |
| jtds-1.2.5-dist | 17/01/2011 13:20 | WinRAR ZIP archive | 524 KB | |
| sqljdbc_3.0.1301.101_enu | 17/01/2011 13:00 | Application | 3,694 KB | |

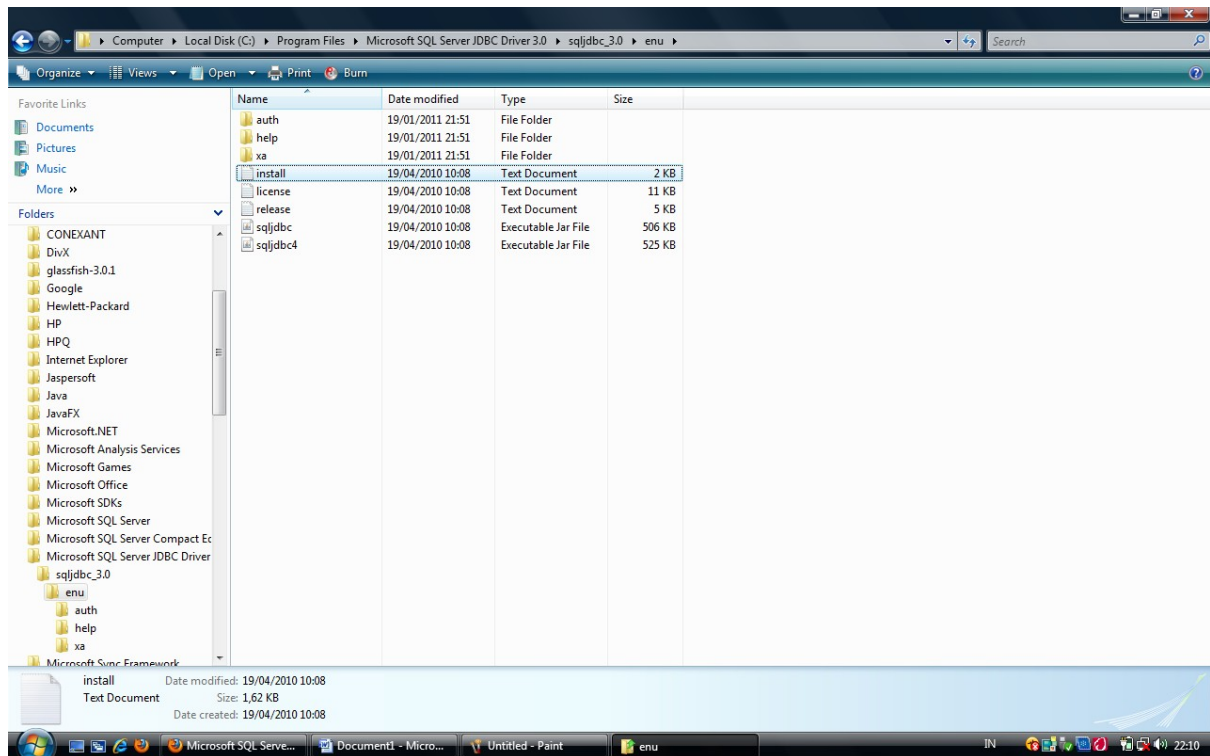
Extract file driver hasil download. Berdasarkan note dari hasil extract, direkomendasikan file hasil extract lokasi nya ada di folder **program files**, dengan nama directory default / jangan dirubah, yaitu **Microsoft SQL Server JDBC Driver 3.0**

```
INTRODUCTION
-----
These are instructions for unpacking the sqljdbc_<version>_enu.exe and the
sqljdbc_<version>_enu.tar.gz.

WINDOWS
-----
1. Read the license.txt file. Downloading and using the Microsoft SQL Server JDBC Driver 3.0 signifies acceptance of this license.
2. Download the sqljdbc_<version>_enu.exe to a temporary directory.
3. Run sqljdbc_<version>_enu.exe
4. Enter an install directory when prompted; it is recommended that you unpack
this zip file in %ProgramFiles% with the default directory:

    Microsoft SQL Server JDBC Driver 3.0
5. After the package unpacks, open the JDBC Help System by opening
%InstallationDirectory%\Microsoft SQL Server JDBC Driver 3.0\sqljdbc_<version>\<language>\
help\default.htm. This will display the help system in your web browser.
```

Hasil di laptop saya :D



Langkah selanjut nya buka manual yang ada di folder hasil extract tadi. Ada di direktori:

C:\Program Files\Microsoft SQL Server JDBC Driver 3.0\sqljdbc_3.0\enu\help

Yang pertama adalah system requirement. Dari hasil extract terdapat 2 buah file jar/library.

| | | | |
|--|------------------|---------------------|--------|
|  sqljdbc | 19/04/2010 10:08 | Executable Jar File | 506 KB |
|  sqljdbc4 | 19/04/2010 10:08 | Executable Jar File | 525 KB |

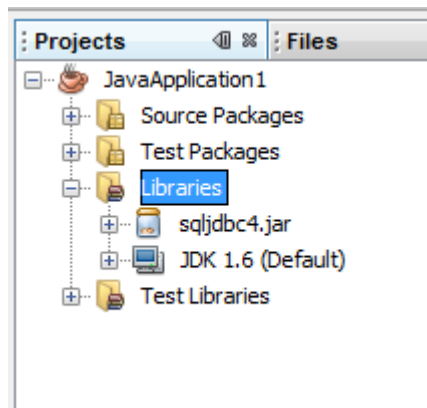
Bila jre yang digunakan JRE 5.0 maka gunakan **sqljdbc.jar**.

Bila jre yang digunakan JRE 6.0 maka gunakan **sqljdbc4.jar**

for manual :

| JAR | Description |
|--------------|---|
| sqljdbc.jar | <p>sqljdbc.jar class library provides support for JDBC 3.0.</p> <p>sqljdbc.jar class library requires a Java Runtime Environment (JRE) of version 5.0. Using sqljdbc.jar on JRE 6.0 will throw an exception when connecting to a database.</p> <p>Note: The JDBC Driver does not support JRE 1.4. You must upgrade JRE 1.4 to JRE 5.0 or later when using the JDBC Driver0. In some cases, you might need to recompile your application because it might not be compatible with JDK 5.0 or later. For more information, see the documentation on Sun Microsystems Web site.</p> |
| sqljdbc4.jar | <p>sqljdbc4.jar class library provides support for JDBC 4.0. It includes all of the features of the sqljdbc.jar as well as the new JDBC 4.0 methods.</p> <p>sqljdbc4.jar class library requires a Java Runtime Environment (JRE) of version 6.0 or later. Using sqljdbc4.jar on JRE 1.4 or 5.0 will throw an exception.</p> <p>Note: Use sqljdbc4.jar when your application must run on JRE 6.0, even if your application does not use JDBC 4.0 features.</p> |

buat project baru di netbeans, lalu add library / jar. Berhubung JRE yg saya gunakan JRE 6.0 jd yg saya pakai adalah **sqljdbc4.jar**



Selanjutnya set CLASSPATH.

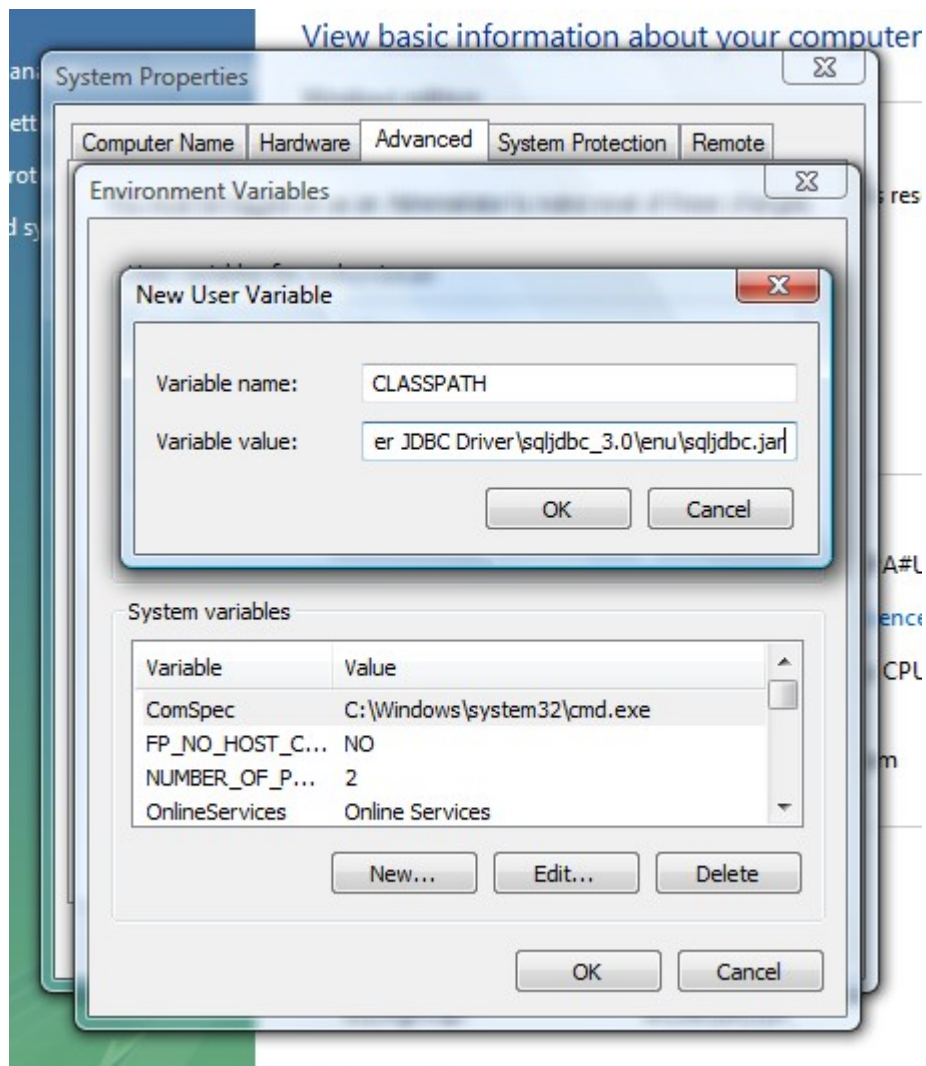
The following is an example of the CLASSPATH statement that is used for a Windows application:

```
CLASSPATH =.;C:\Program Files\Microsoft SQL Server JDBC Driver\sqljdbc_3.0\enu\sqljdbc.jar
```

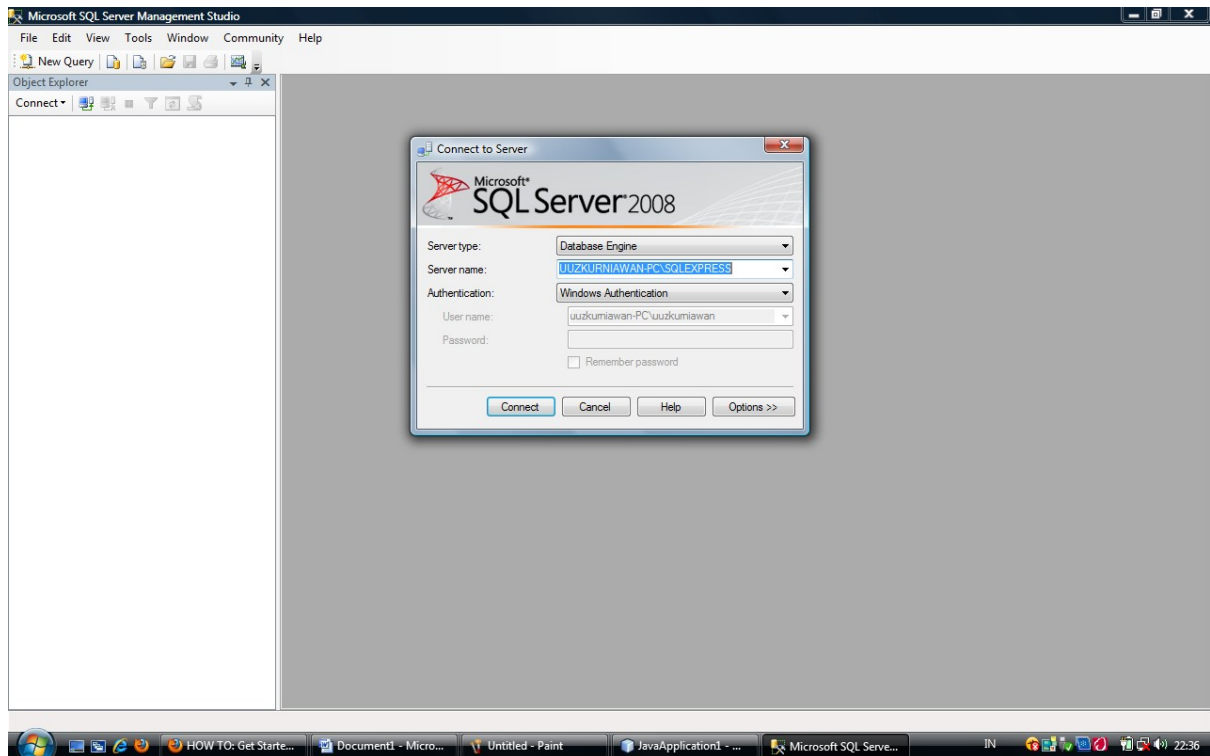
Cara nya:

```
cara setting class PATH:  
1. Start>MyComputer>klik kanan> properties  
2. Advanced System Setting > Environment Variables > New  
3. variable name: CLASSPATH  
4. Variable Value: C:\Program Files\Microsoft SQL Server JDBC Driver\sqljdbc_3.0\enu\sqljdbc.jar  
5. ok>ok>ok
```

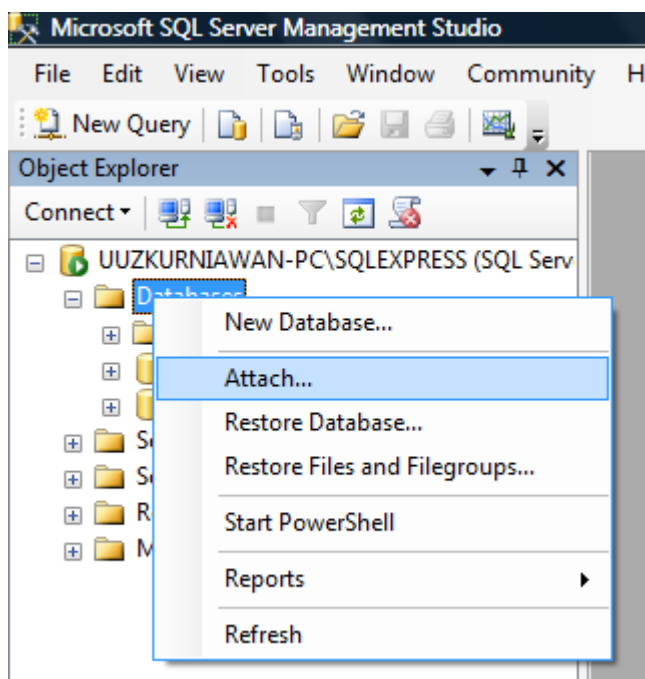
Ini gambar nya:

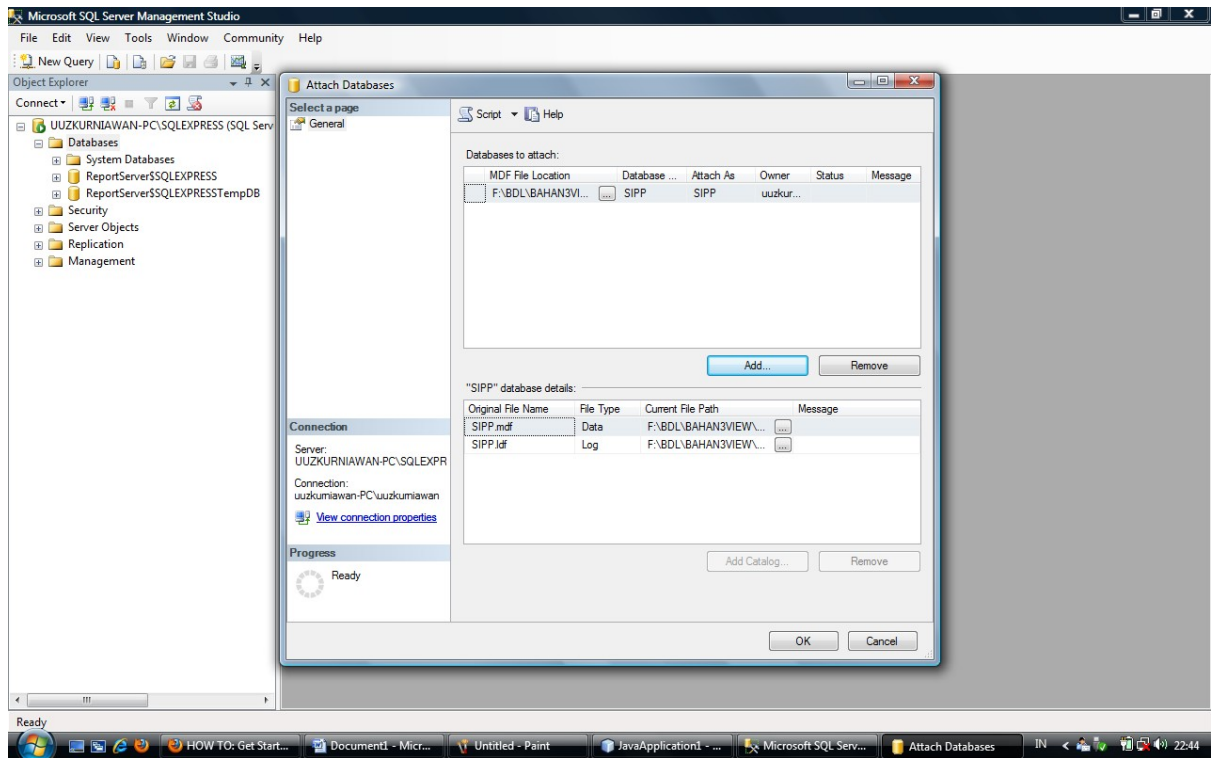


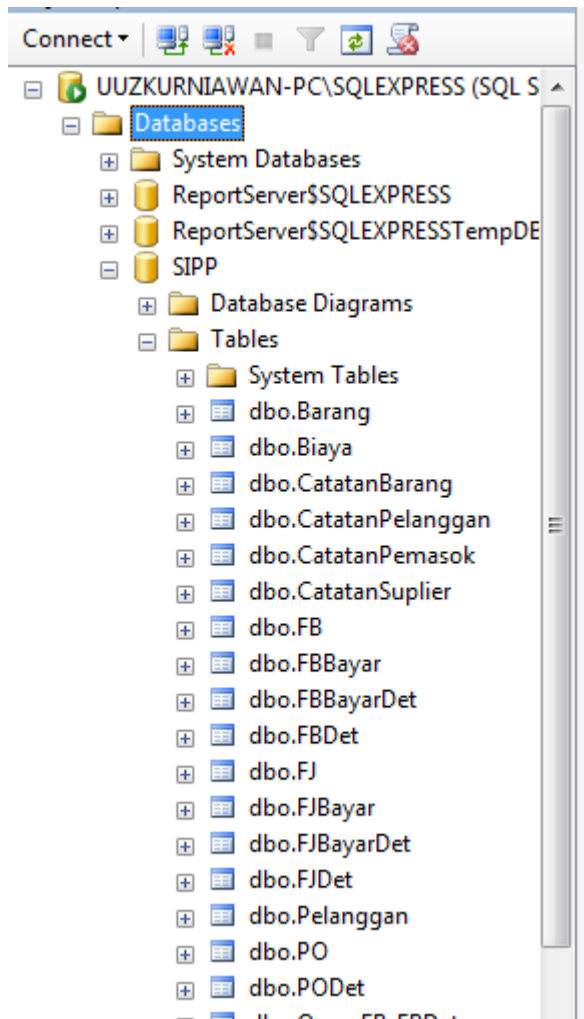
Buka sql server management studio > connect



Buat DB baru atau attach file .mdf bila sudah ada (berhubung saya sudah ada file .mdf biar cepat saya attach saja). Tujuan nya adalah nantinya nama db ini dibutuhkan dalam pembuatan class utk tes koneksi.

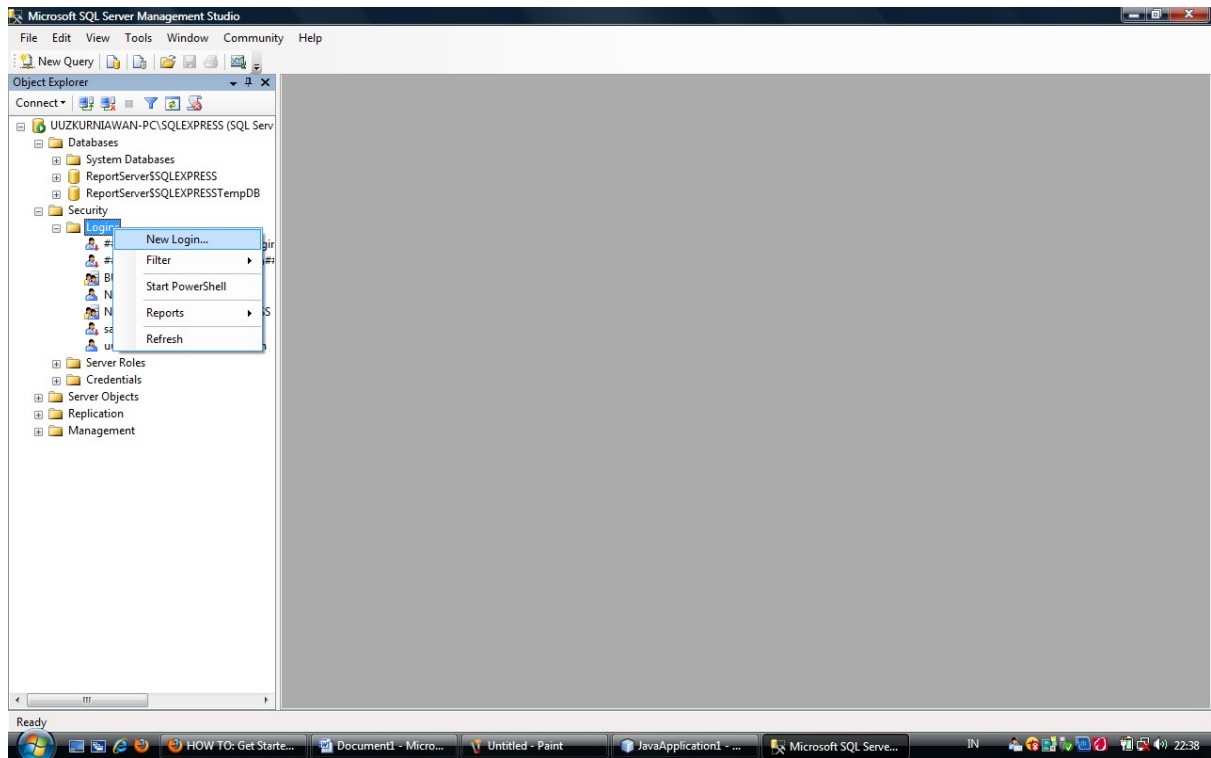




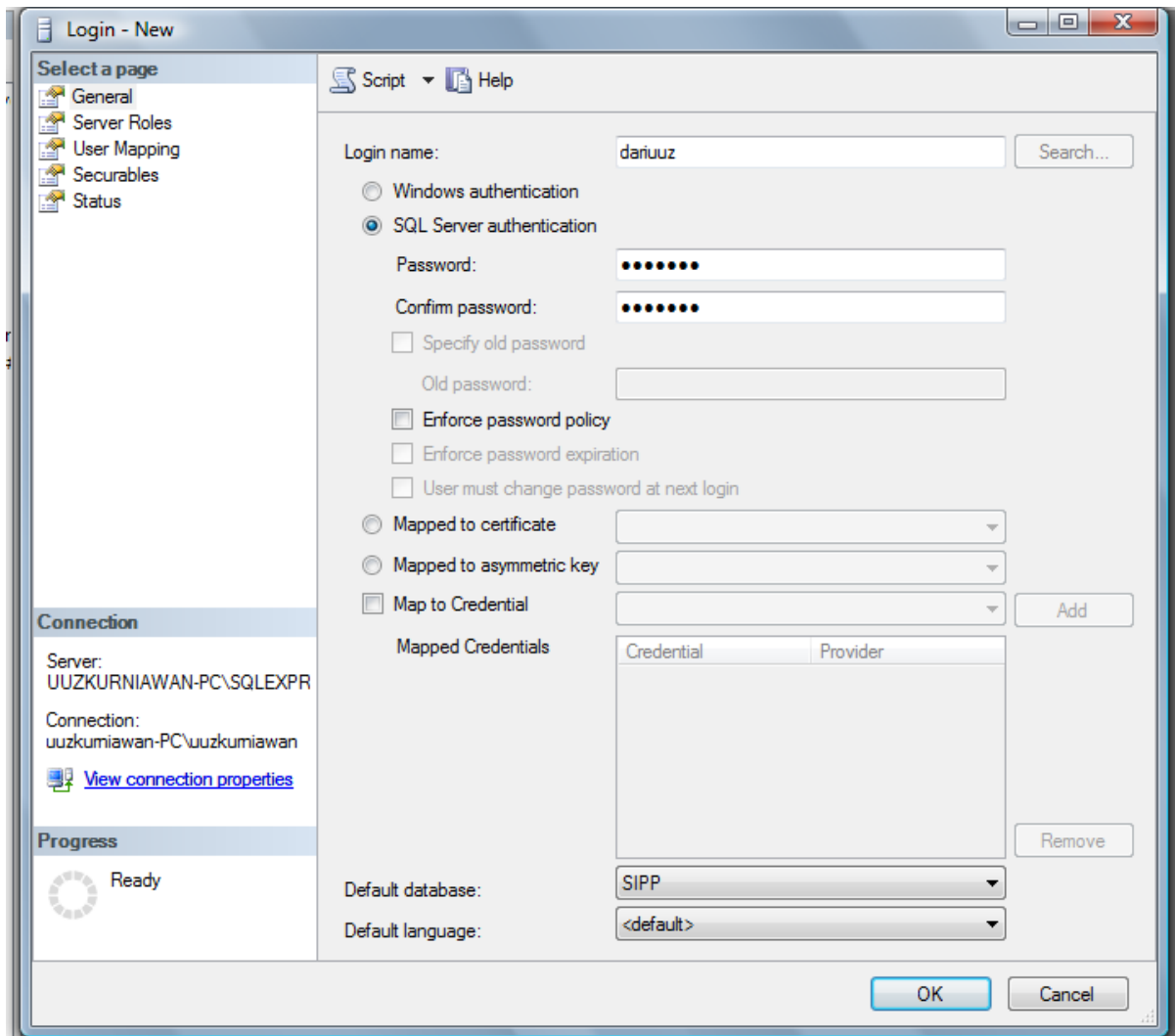


DB saya sudah masuk :D

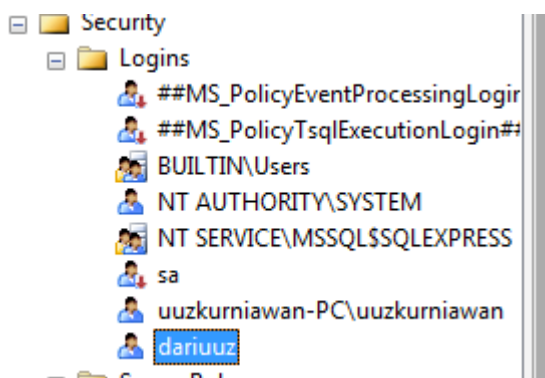
Selanjutnya pada object explore, expand tree security , lalu klik kanan pada login, buat new login



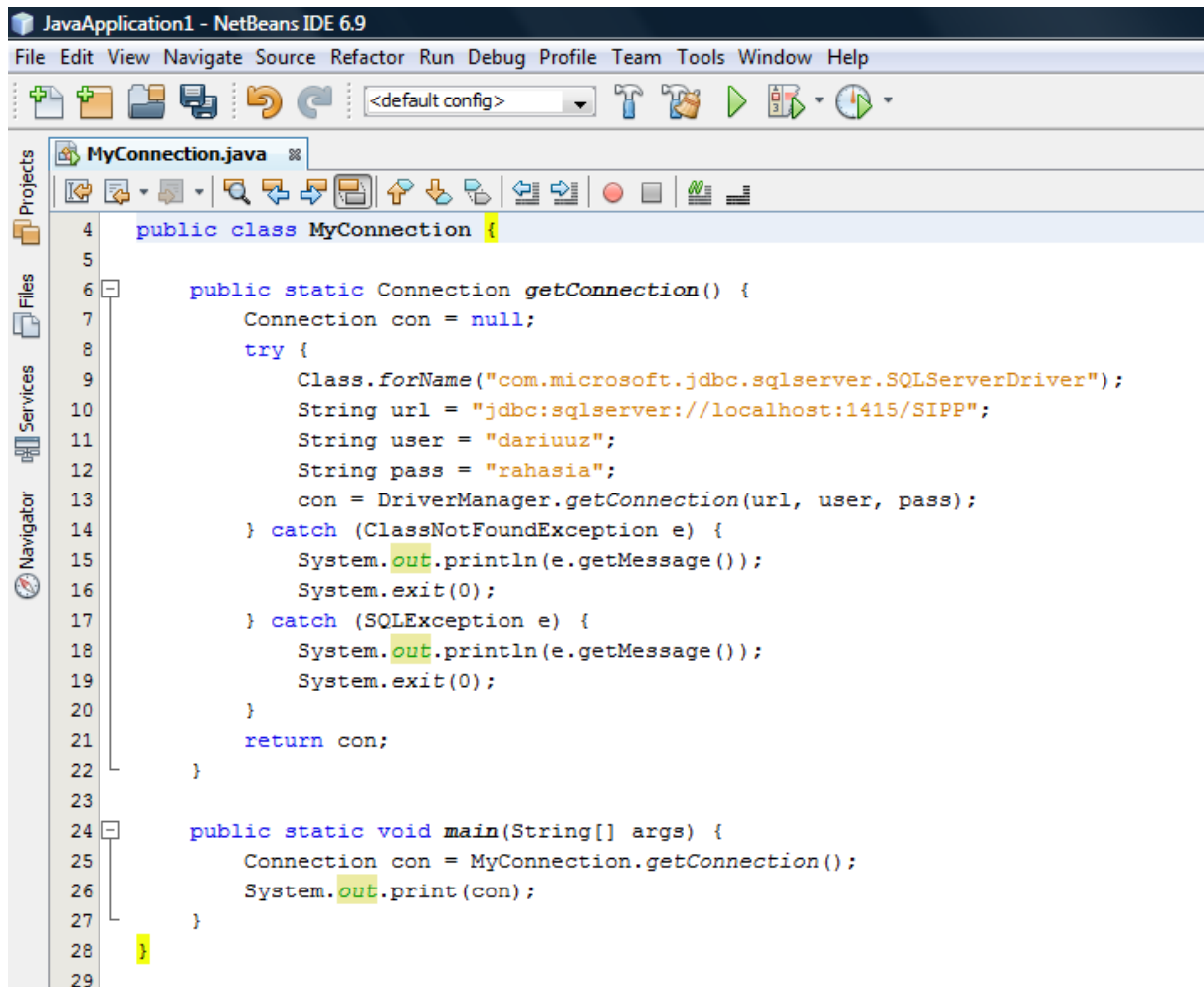
Isilah login name, password, default DB menunjuk ke DB yang tadi kita buat



Jadilah 1 buah user baru :D



Sekarang kembali ke netbeans, buat sebuah class untuk test koneksi. Ini contoh sourcecode nya:



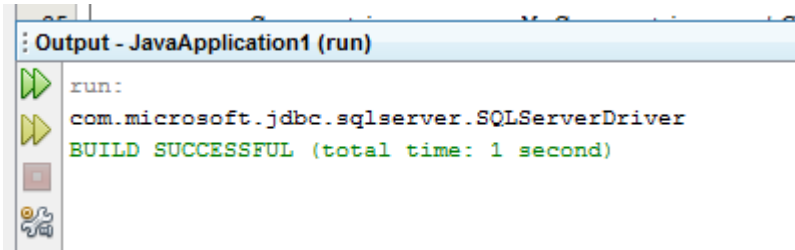
Biar ga cape ngetik :P

```

import java.sql.*;
public class MyConnection {
    public static Connection getConnection() {
        Connection con = null;
        try {
            Class.forName("com.microsoft.jdbc.sqlserver.SQLServerDriver");
            String url = "jdbc:sqlserver://localhost:1415/SIPP";
            String user = "dariuuz";
            String pass = "rahasia";
            con = DriverManager.getConnection(url, user, pass);
        } catch (ClassNotFoundException e) {
            System.out.println(e.getMessage());
            System.exit(0);
        } catch (SQLException e) {
            System.out.println(e.getMessage());
            System.exit(0);
        }
        return con;
    }
    public static void main(String[] args) {
        Connection con = MyConnection.getConnection();
        System.out.print(con);
    }
}

```

Akhir dari tutorial, klik kanan > runfile :P



Selamat anda telah berhasil mengkoneksi kan jdbc via sqlserver :D